

NAWCC Pacific
Northwest
Chapter 31

Upcoming Events

- **Oct 19, 2008** —
Monthly Meeting,
2:00 pm @ Beaverton
Library
- **Nov 8, 2008** —
Horology Workshop,
(Pre-register please)
1:00 pm, Monarch Hotel
- **Nov 16, 2008** —
Monthly Meeting,
2:00 pm @ Beaverton
Library
- **Dec 21, 2008** —
Chapter 31 Christmas
Party, Monarch Hotel

Inside this issue:

<i>President's Message</i>	1
<i>Meeting Minutes</i>	2 - 3
<i>Upcoming Horology Workshop</i>	4
<i>Holiday Party Insert</i>	
<i>October Program</i>	5
<i>Glen Harding Tribute</i>	6 - 7

We're on the
web .. Check
us out
nawcc31.org

NAWCC Chapter 31

TIMEOUT

October, 2008

Ch. 31 President's Message - Terry White

The September meeting was attended by a large number of chapter members. Dave Jacobs provided a program on early French watches, which provided interesting historic information on the budding watch industry.

Chapter 31's Officer and Committee Manual lists duties of elected and appointed positions within our chapter. Two positions have been vacant for a few years, and I have asked two of our members to fill the vacancies. Bill Butcher has volunteered to be the chapter's "Meier and Frank Clock Coordinator." Paul Drake has volunteered to be the position of "OMSI Tower Clock Coordinator." Each position is important, as we need an individual to be the key contact person if problems arise concerning each clock. Things have been quiet on this front but we must not ignore the need for coordinators for each. Thank you Bill and Paul.

Work Shop: Remember that on November 8th, Chapter 31 is hosting a workshop. Please see the registration for an update. For those looking to add a jeweler's lathe to their workbench, there will be a few there for sale along with some accessories. At this time, we have fourteen registered. We need to have a pretty close count on those attending, so if you plan to attend and haven't registered, please do so.

Board Meeting Notes: Prior to the regular September meeting, a board meeting was convened to take care of some chapter business. The board voted to fund a new chapter telephone directory to be distributed after the 2009 dues are collected. A special dues invoice will be mailed to chapter members and will include a short questioner regarding the directory.

The board also voted and approved a donation of \$250 to the Salem Chapter 157 for the help with our 2008 Pacific Northwest Regional held this past May. If you missed the display of Mystery Clocks that Chapter 157 put together for the regional, you indeed missed a wonderful presentation.

Charles Schubert asked the board to donate \$200 from the 2008 Regional profits for the Science Olympiad Program. This donation made to the NAWCC for the high school program funds over 2,600 high schools nation wide in this event of teaching students about time, timekeeping, astronomy, physics, mechanics and horology. The board unanimously passed this request.

Lastly: Of the first two Chapter 31 members who originally started the "God Fathers" Saturday morning breakfast group, the last one passed away on the 18th of September. Please read Dick Vigal's excellent tribute to Glen Harding in

NAWCC - CHAPTER 31
Board Meeting Minutes - 21 September 2008

The regular Board meeting of Chapter 31 of the NAWCC was called to order at 1:30 PM by President Terry White. Board members present: Terry White, John Bailey, Bill Butcher, Betty Chisum, Mary Gonzales, Jeff Gonzales, Tom Hammond, Jeff Major, Dan Miller, Mike Robinson, Leo Freiermuth,
Absent: Charles Schubert, & Kris Freiermuth.

Treasurer's Report - was read by Betty Chism. She indicated the group is in sound financial condition.

New Business -

- **Chapter 157 donation for Regional Display** - Topic was presented and agreed that \$250 will be sent to Chapter 157 for their participation in the 2008 Regional.
- **National Science Olympiad** - Charles Schubert has proposed we donate to the national for the National Science Olympiad an event teaching high school students about time and timekeeping. Approximately Two Thousand Six Hundred (2,600) high schools nation wide partake in this event and a donation from our chapter would aid in this program. Motion was passed to donate \$200.
- **Chapter Directory** - An updated Chapter Directory is needed. A guesstimate of \$200 would cover the printing and distribution. Terry indicated he was willing to take on the task, but only if we would use a new layout from top to bottom; no add/remove names or added sheets to the old, but rather a new one in-total.
- **NAWCC Charter to Chapters** - Discussion of the National's plans for new Charters for existing Chapters. The board general felt our group met the requirements for accounting, record keeping, and other requirements of the new Charters. **No action was taken at this time.**

Meeting was adjourned at 2:15 PM.

NEXT MEETING: SUNDAY 19th of OCTOBER 2008 @ the BEAVERTON LIBRARY.

Respectively submitted

Kristen Freiermuth, Secretary with notes taken by Leo J. Freiermuth

NAWCC - CHAPTER 31
Meeting Minutes - 21 September 2008

The regular meeting of Chapter 31 of the NAWCC was called to order at 2:20 PM by President Terry White. Thirty (30) some members and no guests were in attendance.

Approval of Minutes - Unanimously approved as they appeared in the Time-Out.

Treasurer's Report - was read by Betty Chism. She indicated the group is in sound financial condition.

It was announced that long time member Glen Harding had died on the 19th of September 2008.

New Business -

Tall Clock - Discussion was held regarding the tall clock the club displays at the Gresham Historical Society Museum. Insurance for this clock was Six Hundred Dollars (\$600.00) for a year just paid in September. Terms of ownership and stewardship of the clock were discussed.

National Charter proposal - Discussion was entertained regard the National Charter proposals. It was generally felt the Chapter 31 met the Nationals requirements.

Chapter Directory - An updated Chapter Directory was discussed and what would be the best way to gather current information from members. Member's wishes regarding omitting certain items will be respected. It was decided to include a form with the 2009 dues statement in order to accomplish the gathering of this information.

Old Business -

Work Shop - Terry announced ten (10) registrations are in for the workshop class, which will be held at The Monarch Hotel on Saturday the 8th of November. It was indicated a few more may yet register to attend.

Program - Chairman David Jacobs lead a discussion following a NAWCC Power Point presentation of early French watches.

A big thank you to Charles Schubert & Beaverton Bakery for coffee & refreshments! Details of the coming events and programs will be in the Time-Out publication next month. Meeting was adjourned at 3:30 PM.

NEXT MEETING: SUNDAY 19th of OCTOBER 2008 @ the BEAVERTON LIBRARY.

Respectively submitted

Kristen Freiermuth, Secretary with notes taken by Leo J. Freiermuth



The Horology Workshop Is Back!!

NAWCC Pacific Northwest Chapter 31
will be holding a horology workshop on
November 8th, 2008
from 1:00 pm - 5:00 pm at the
Monarch Hotel, Clackamas, Oregon

- How to tear down, clean, oil, and reassemble your jewelers lathe,
presenter is Mike Robinson
- How to handle, repair, and clean mainsprings,
presenter is Jeff Major
- How to re-pivot an arbor,
presenter is Mike Robinson



Bring along your favorite jewelers lathe and learn how to teardown, clean, and oil the fine machine! No tools required, cleaner and oil provided.

NOTE: If you are shopping for jewelers lathe and accessories, there will be some for sale at this workshop.

Registration is required so we know how many chairs will be needed.

Please reserve me a chair at the November 8th Horology Workshop

Name: _____

Address: _____

Telephone: _____

E-Mail: _____

Fill out and send to:

*Terry White, 9480 S. Gribble Rd., Canby, OR 97013 503.263.8357
or email me at president@nawcc31.org*



NAWCC Chapter 31 proudly presents the Annual

Holiday Gathering

Sunday, December 21st, 2008

Monarch Hotel
 12566 SE 93rd Ave
 Clackamas, OR 97015

2:00 pm – Mingle (Mart Table Available)

2:30 pm – Dinner

\$16.55 per Person

(Bargain price for a fabulous meal, you don't want to miss it – Portland Chapter 31 is paying for a portion of your meal.)

Menu Choice

- Combination 6 oz. Rib Eye and 3 oz. Chicken
 Champignon served with Banded Baby Red Potatoes,
 Fresh Seasonal Vegetables , Rolls & Butter, Chef's
 Assorted Desserts
- Vegetarian Meal (by request only)

RSVP 12/17/2008

✂

Member Name		Meal Choice (pick one)	<input type="checkbox"/> Rib Eye <input type="checkbox"/> Vegetarian	\$16.55
Spouse/ Guest		Meal Choice (pick one)	<input type="checkbox"/> Rib Eye <input type="checkbox"/> Vegetarian	\$16.55

Cut and send this slip along with payment (make check payable to NAWCC):
 Portland Chapter NAWCC Holiday Gathering
 559 NE 167th Place
 Portland, OR 97230-6103

From the Program Chair— David Jacobs

The program for our October Meeting will be brought to us by member George Matto.

It will be about the Antikythera mechanism, an ancient mechanical calculator also described as the first known mechanical computer designed to calculate astronomical positions. It was discovered in the Antikythera wreck off the Greek island of Antikythera, between Kythera and Crete, in 1901. Subsequent investigation, particularly in 2006, dated it to about 150–100 BC, and hypothesised that it was on board a ship that sank en route from the Greek island of Rhodes to Rome. Technological artifacts of similar complexity did not reappear until a thousand years later. This represents the early application of a geared mechanism that precedes the mechanical clock.



If you have an item to share that relates to the letter "G" (for Greek), please bring it to the meeting and tell us about it. See you there!



All newsletter submissions must be to Jeff by the end of each month

Send to newsletter@nawcc31.org

In Memory of Glen E. Harding

We are saddened by the passing of Glen Harding who died September 19, 2008 at the age of 89. Glen was a good friend and mentor to many of us in Chapter 31 and he was a founder of the Saturday breakfast group referred to as "The Godfathers" which has been a tradition for at least 40 years.



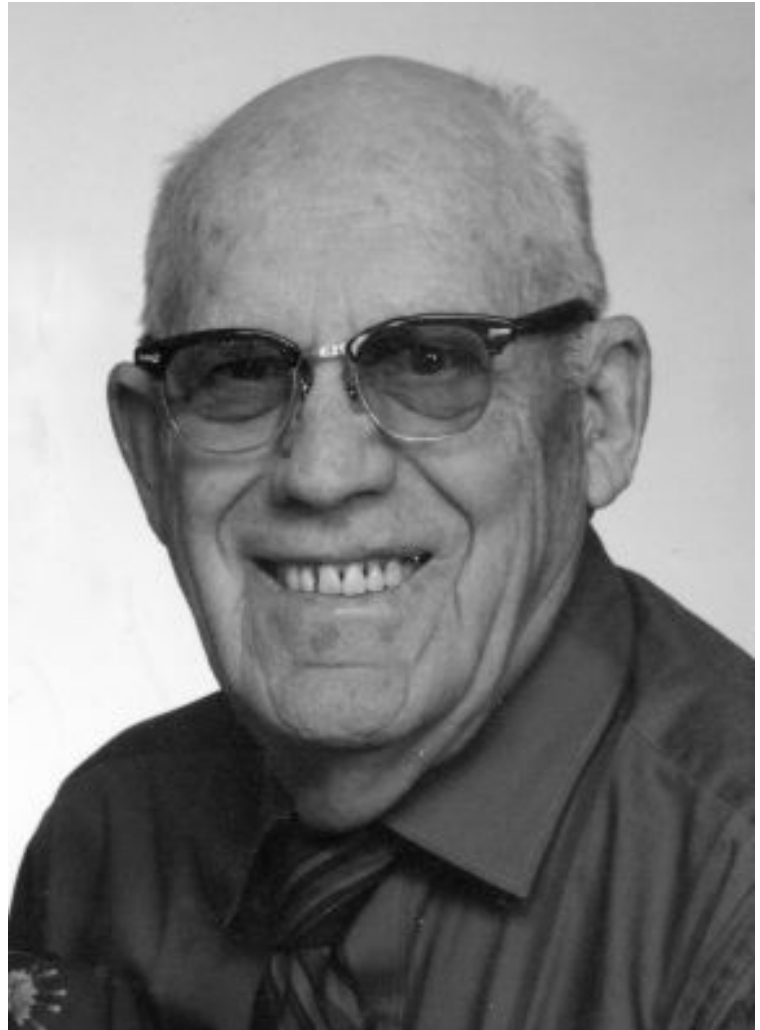
Glen was born January 5, 1919 in Garden City, South Dakota and he served in the U. S. Army during World War II in Europe. One of Glen's assignments while in the service was as a guard at Nuremberg during the trials of the Nazi war criminals Goering and others. Glen was an excellent machinist and moved to the Hillsboro area in 1960 and has lived intermittently in Oregon and South Dakota since.

In 1941 Glen married Bernice Lueders and they had two boys Keith and Kevin. Bernice passed away in 1966.

I know that we all have many good thoughts of Glen and I will share two of my favorites. While we were working on the Oregonian tower clock, which OMSI now

possesses we noted that the clock had provisions for striking though we were unable to locate any of those parts of the train. A key part of the mechanism was a chain to drive the striker.

This was a large chain not unlike the chain of a fusee watch but much larger the links being about 2-3 inches in length. Those chains are no longer made so Glen volunteered to oversee the making of the chain in Kevin's shop. We formed a group and called ourselves the Chain Gang and with Glen's good help and council we produced the chain. God Bless Glen, we couldn't have done it without him.



A second memory I have is of the Regional in Kent, Washington several years ago. Glen had disappeared to South Dakota the previous Fall and we had not seen him nor hair of him for some time. Bob Schug and I were checking in to the host hotel when we heard a familiar gravelly voice say something like ' How are you guys?'. Well we were delighted to see Glen who had driven from South Dakota by himself to attend the regional !!! We had dinner with him as I recall.

I know I speak for everyone in our watch and clock community, which includes not only Chapter 31 but the other surrounding chapters where Glen was known, when I say to Kevin and Keith that our hearts go out to you and your families. Your Dad had a long and good life but we are never ready to say good bye. Your Dad will be very much missed,

Dick Vigal



NAWCC Pacific
Northwest Chapter 31
Portland, Oregon

20140 S. Fischers Mill Rd.
Oregon City, Oregon 97045

Your Council Members at work for you!

Council Members

President

— Terry White (president@nawcc31.org)

Vice President

— Mary Gonzalez (vicepresident@nawcc31.org)

Secretary

— Kris Freiermuth (secretary@nawcc31.org)

Newsletter Editor & Webmaster

— Jeff Major (newsletter@nawcc31.org)

Treasurer & Sunshine Person

— Betty Chisum (treasurer@nawcc31.org)

Directors

Jeff Major (2010)

Leo Freiermuth (2010)

George Matto (2012)

Dan Miller (2012)

Mark DeAtley (2012)

Committee Chairs

Historian

— Dan Miller

Mart

— Jeff Gonzalez

Membership

— John Bailey

Program

— David Jacobs

Nominating & Elections

— Harold Baesler

Mailings

— Jeff Major

Workshops

— Mike Robinson

Raffle & Door Prizes

— Jeff Gonzalez

NAWCC Bulletin Coordinator

— Tom Hammond

Outside Events

— Leo & Kris Freiermuth